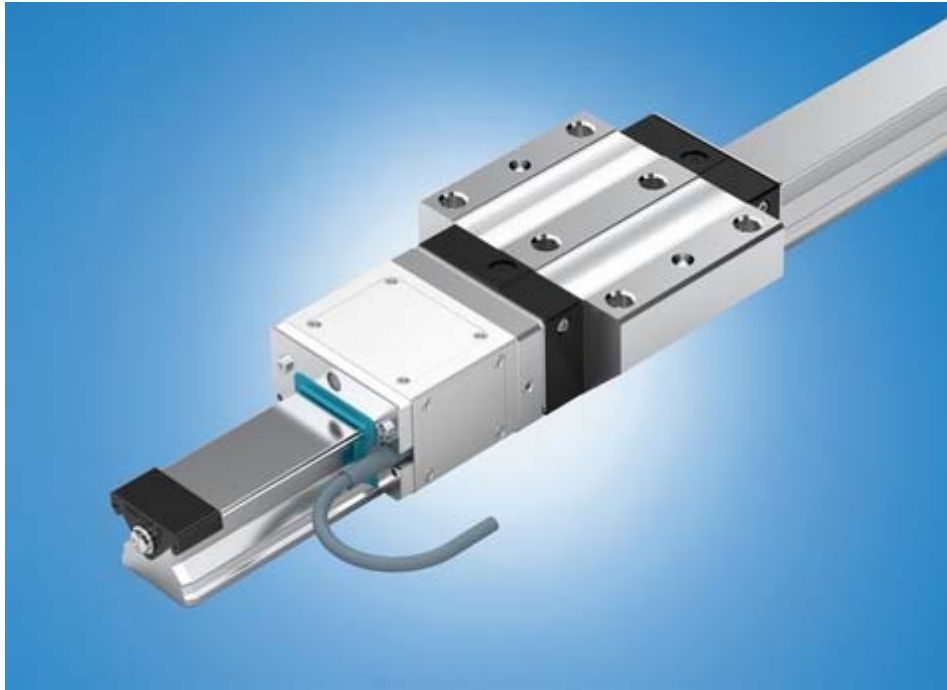


EuroBLECH 2010

PI 064/10
19/08/2010

Precise Position Measurement Even in Harsh Environments

Integrated Measuring System from Rexroth: Insensitive to dirt and interference fields



Integrated Measuring System for linear guides from Rexroth for harsh ambient conditions: Precise, compact and easy to use.

The Integrated Measuring System for linear guides from Rexroth provides high-precision position measurement even in harsh environments with cooling fluids, wood, glass and silicon dust or shavings. The contact-free, inductive scanning is also insensitive to electrical and magnetic interference fields such as those which occur when using linear motors. Simple assembly and quick replacement without special skills means that it takes even less time to put the zero-wear position measuring system for ball and roller rail systems into operation.

The Integrated Measuring System has proven itself in the harsh production conditions found in manufacturing environments with exposure to oil and water as well as in woodworking applications and on sawing stations for solar cell wafers. It is also extremely resistant to large chips and very fine dust. Unlike glass measuring rods, the sensors do not have to be protected by buffer air or other design measures.

Contact for Journalists:
Bosch Rexroth AG
Manuela Keßler
D-97816 Lohr a. Main
Tel.: +49 9352 18-4145
Fax: +49 711 811 517-2107
manuela.kessler@boschrexroth.de

Press Release

The basis of the Integrated Measuring System for linear guides is a precision scale which has high-precision graduations and is connected internally to the profile rail. For measurement lengths of up to 4,500 mm it achieves an absolute accuracy of $\pm 5\mu\text{m}$ and a level of precision of $\pm 3\mu\text{m}$ for travel distances up to 2,000 mm. A tightly welded stainless steel strip protects the precision scale of the contact-free measuring system. The integrated electronics of the AMOSIN-type sensors, which are compliant with protection type IP67, evaluates the signals in real-time and transmits them in analog form using 1VSS or in digital form by TTL.

PI 064/10
19/08/2010

The precision scale contains the original profile of the guide rail so that users can use the standard runner block for the most diverse versions of ball and roller rail systems. The typical Rexroth interchangeability of profile rails and runner blocks of the same sizes is thus assured without restriction. The separately replaceable sensor head with integrated electronics does not change the height and width of the runner blocks. Several measuring systems can operate in parallel on a single rail and can even record highly dynamic movements precisely.

The inductive Integrated Measuring System from Rexroth operates contact-free and therefore suffers zero wear. Rexroth ball and roller rail systems have a seal and lubrication concept which extends maintenance intervals as far as providing lifetime lubrication. This reduces life cycle costs and increases the level of freedom for the installation of the components. For more information please visit: www.boschrexroth.com

Rexroth will be exhibiting at the EuroBLECH in Hall 11, Stand E06.

Bosch Rexroth AG is one of the world's leading specialists in the field of drive and control technologies. Under the brand name of Rexroth the company supplies more than 500,000 customers with tailored solutions for driving, controlling and moving. Bosch Rexroth is a partner for industrial applications and factory automation, mobile applications and using renewable energies. As The Drive & Control Company, Bosch Rexroth develops, produces and sells components and systems in more than 80 countries. In 2009 Bosch Rexroth part of the Bosch Group, achieved sales of around 4.1 billion Euro with 34,200 employees.

For more information please visit: www.boschrexroth.com

Contact for Journalists:
Bosch Rexroth AG
Manuela Keßler
D-97816 Lohr a. Main
Tel.: +49 9352 18-4145
Fax: +49 711 811 517-2107
manuela.kessler@boschrexroth.de

Press Release

PI 064/10
19/08/2010

Reader Inquiries:

Tel.: +49 9352 18-4145
Fax: +49 711 811 517-2107
E-Mail: Anfragen-PR@boschrexroth.de
Address: Marktplatz 3, D-97816 Lohr a. Main
Internet: www.boschrexroth.com